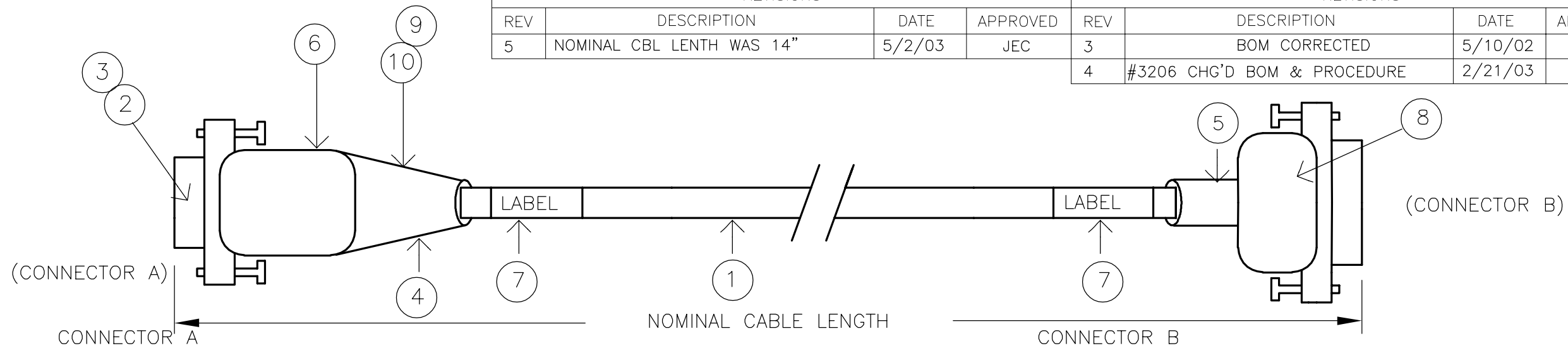


REVISIONS				REVISIONS			
REV	DESCRIPTION	DATE	APPROVED	REV	DESCRIPTION	DATE	APPROVED
5	NOMINAL CBL LENTH WAS 14"	5/2/03	JEC	3	BOM CORRECTED	5/10/02	MCM
				4	#3206 CHG'D BOM & PROCEDURE	2/21/03	MCM



WIRE COLOR	FUNCTION	PIN #
RED	+5VDC	1
WHITE	Ch A+	2
YELLOW	Ch A-	3
GREEN	Ch B+	4
BLUE	Ch B-	5
ORANGE	Ch Z+	6
BROWN	Ch Z-	7
BLACK	GROUND	8
WHITE/BLUE	+5 VDC (HALL)	9
WHITE/BROWN	HALL 1	10
WHITE/ORANGE	HALL 2	11
WHITE/VIOLET	HALL 3	12
YELLOW/ORANGE	TEMP	13
YELLOW/ORANGE	TEMP	14
WHITE/GREEN	GROUND	15
SHIELD	SHIELD	Shield Case

THIS CABLE CAN BE NO LONGER THAN 7.5 METERS (25 FT). FOR LONGER CABLES SEE DRAWING 006-1884

WIRE COLOR	FUNCTION	PIN #
RED	+5VDC	1
BLACK	GROUND	3
WHITE	Ch A+	5
YELLOW	Ch A-	6
GREEN	Ch B+	7
BLUE	Ch B-	8
ORANGE	Ch Z+	9
BROWN	Ch Z-	10
YELLOW/ORANGE	TEMP	12
YELLOW/ORANGE	TEMP	13
WHITE/BLUE	+5 VDC (HALL)	14
WHITE/GREEN	GROUND	15
WHITE/BROWN	HALL 1	16
WHITE/ORANGE	HALL 2	17
WHITE/VIOLET	HALL 3	18
SHIELD	SHIELD	Shield Case

<b>METRIC UNITS</b> ALL DIMENSIONS ARE IN MILLIMETERS (UNLESS OTHERWISE SPECIFIED)		ALL PARTS AND ASSEMBLIES TO BE MANUFACTURED PER PARKER HANNIFIN DAEDAL DIVISION PS1000 SPECIFICATIONS	
ALL THREADS TO BE: I.S.O. 4g6g OR 4H6H (COARSE PITCH)		STANDARD TOLERANCES, UNLESS OTHERWISE SPECIFIED DECIMALS: .X ±.2, .XX ±.10, .XXX ±.010 RMS FINISH: 1600 ANGLES: ±0'30"	THE INFORMATION CONTAINED HEREIN IS BEING MADE AVAILABLE ONLY AS THE PROPERTY OF AND FOR THE PURPOSES OF PARKER HANNIFIN CORP. DAEDAL DIVISION. IT CANNOT BE LAWFULLY REPRODUCED IN ANY FORM NOR DIVULGED TO ANY THIRD PARTY, NOR USED FOR ANY PURPOSE OTHER THAN THAT WHICH IT HAS BEEN MADE AVAILABLE TO YOU WITHOUT THE EXPRESS WRITTEN CONSENT OF PARKER HANNIFIN DAEDAL DIVISION
REFERENCE DRAWINGS ASSY or NSPER No.: SALES ORDER No.: FILE NAME: MADE FROM(FILE):	CHAMFERS: 45° x .5   RADII: .5 R. REMOVE BURRS, BREAK SHARP EDGES MATERIAL: N/A FINISH: N/A	DRAWN: MCM 3/19/02 CHECKED: DESIGN: MCM 3/19/02 ENGINEERING: MANUFACTURING: QUALITY ASSURANCE: ASSEMBLY:	Parker DAEDAL Division Automation Manual & Motorized Positioning Systems <b>ENCODER/HALL CABLE GEMINI VERSION</b> AutoCad DRAWING B 006-1739 SCALE: N/A   REPRO:   SHT. 1 OF 1   REV. 5