



Parker Motion Manager Requirements

Introduction:

The purpose of this documents is minimum hardware requirements for PMM application installation and software prerequisites required.

Hardware Requirements:

4 GB RAM & Any processor (Intel or AMD) with Core 2 Duo or Core i3 and Above.

Software Requirements:

Microsoft Windows 7 or Windows 10. (32 bit or 64 bit).

Admin Rights:

Admin rights requires in user PC to install the PMM application.

Pre-Installation Requirements:

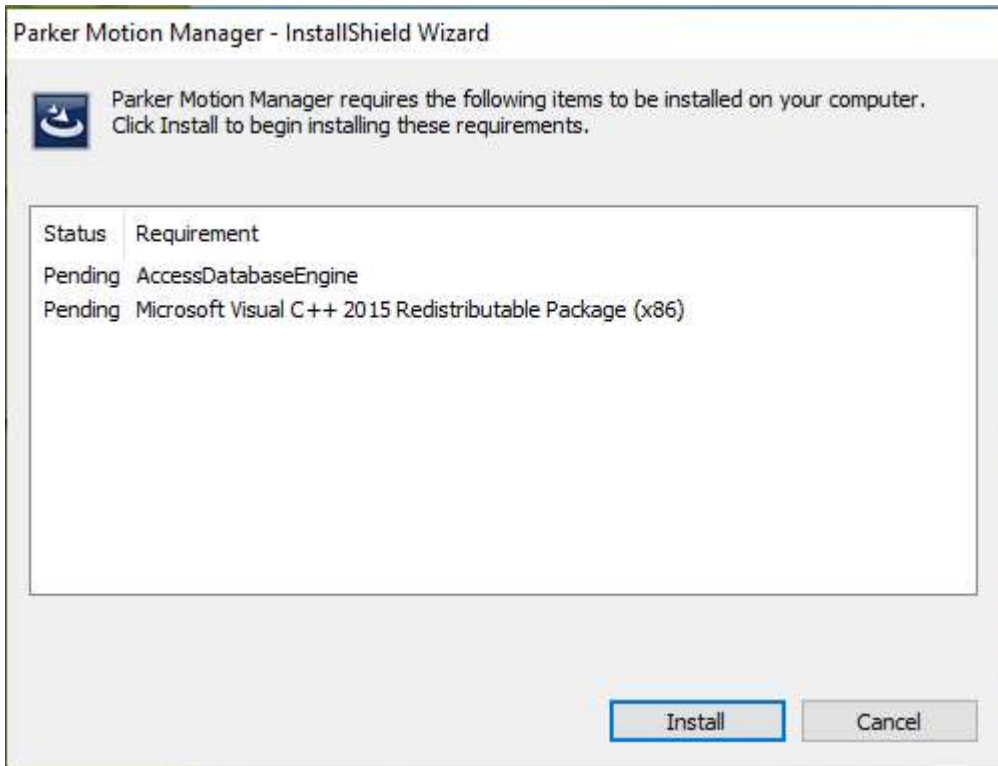
The following prerequisites and requirements must be satisfied in order for the to install successfully.

- a) Microsoft Access database Engine 2010 (English)
- b) Microsoft Visual C++ 2015 Redistributable Package(x86)

Note:

- 1) These prerequisite will automatically get install while installing PMM setup. Not required any configure/download manually. While installing the setup it automatically installs the all the prerequisites in user machine.

- 2) The installer program runs checks for the software prerequisites, and if any prerequisites are missing, it lists the missing items and requests that they be installed. The installation will not proceed until all prerequisites are installed



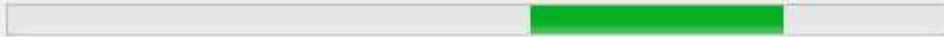
Parker Motion Manager - InstallShield Wizard



Parker Motion Manager requires the following items to be installed on your computer. Click Install to begin installing these requirements.

Status	Requirement
Succeeded	AccessDatabaseEngine
Installing	Microsoft Visual C++ 2015 Redistributable Package (x86)

Installing Microsoft Visual C++ 2015 Redistributable Package (x86)



Install

Cancel